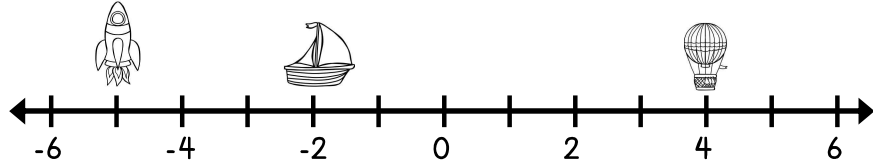
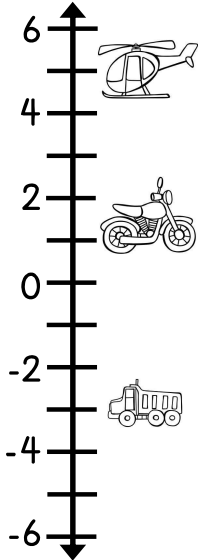


# GRAPHING ON THE COORDINATE PLANE

List the location of the objects on the number lines below.



-3 ON THE VERTICAL NUMBER LINE	4 ON THE HORIZONTAL NUMBER LINE	SAILBOAT
MOTORCYCLE	5 ON THE VERTICAL NUMBER LINE	ROCKET

## COORDINATE PLANE

- The coordinate plane is formed by two number lines, a horizontal number line called the \_\_\_\_\_ and a vertical number line called the \_\_\_\_\_.
- The lines intersect at a point called the \_\_\_\_\_, which is located at \_\_\_\_\_.

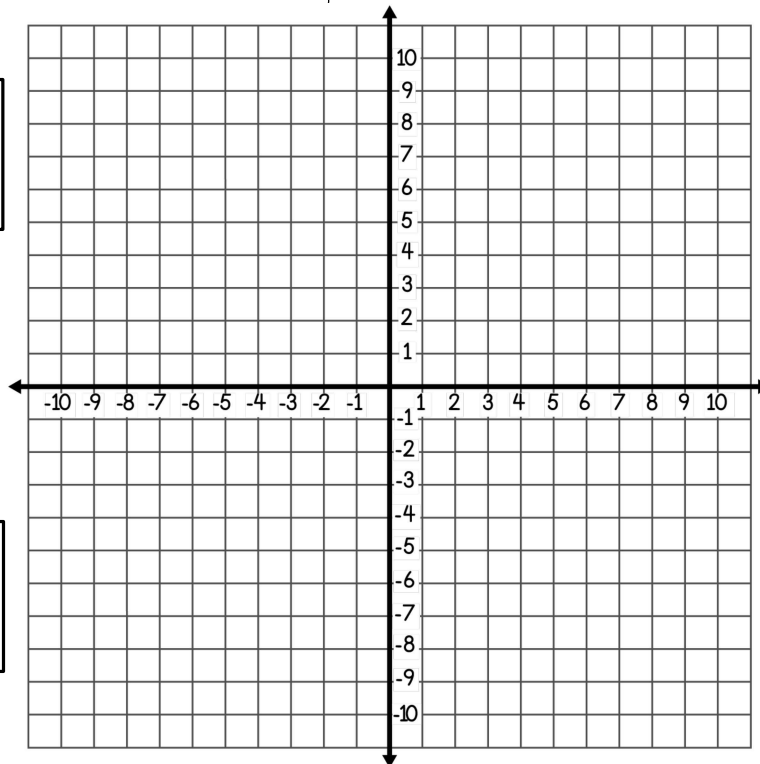
Label the different parts of the coordinate plane.

QUADRANT \_\_\_\_\_  
\_\_\_\_\_ x-coordinates  
\_\_\_\_\_ y-coordinates

QUADRANT \_\_\_\_\_  
\_\_\_\_\_ x-coordinates  
\_\_\_\_\_ y-coordinates

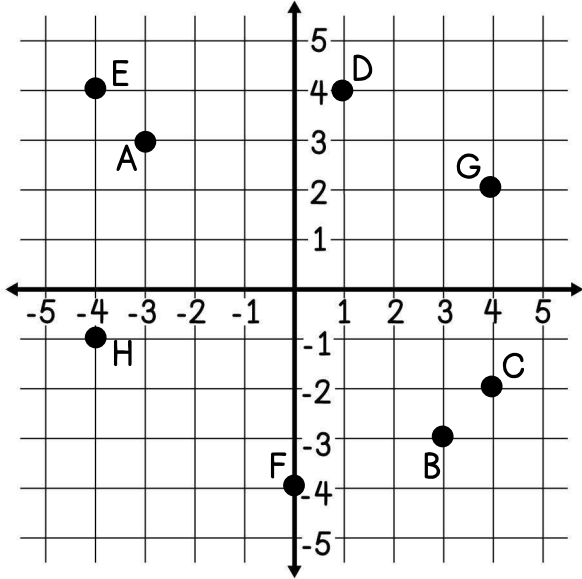
QUADRANT \_\_\_\_\_  
\_\_\_\_\_ x-coordinates  
\_\_\_\_\_ y-coordinates

QUADRANT \_\_\_\_\_  
\_\_\_\_\_ x-coordinates  
\_\_\_\_\_ y-coordinates



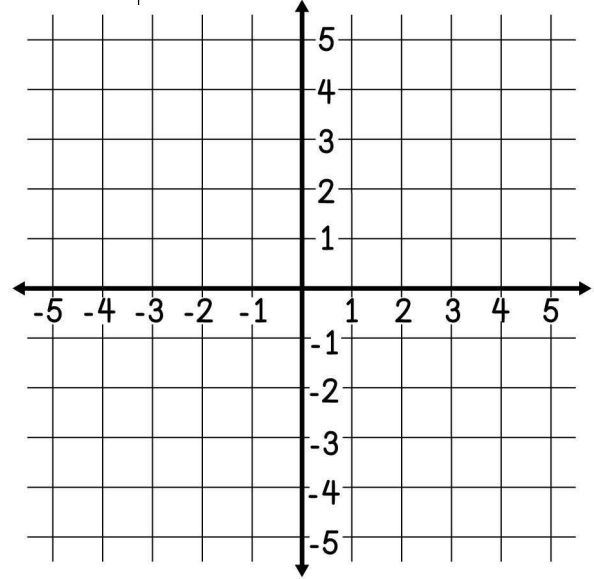
Use the coordinate plane below to answer the questions.

1. Determine the ordered pair for each point in the table.



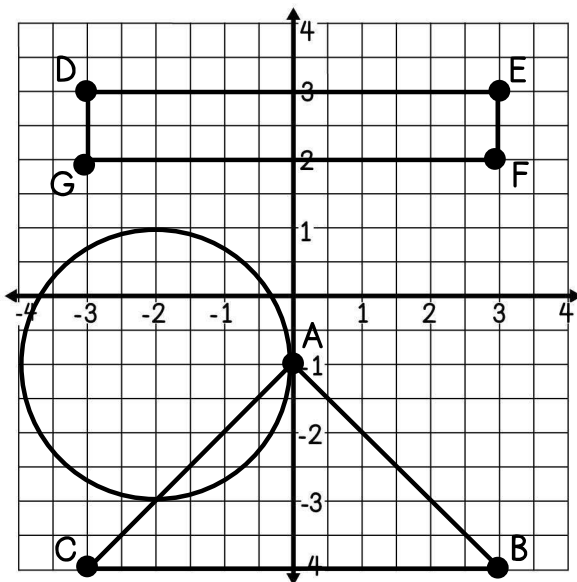
<b>A:</b>	<b>B:</b>
<b>C:</b>	<b>D:</b>
<b>E:</b>	<b>F:</b>
<b>G:</b>	<b>H:</b>

2. Plot and label the points below on the coordinate plane.



<b>I:</b>	(2, -3)	<b>J:</b>	(-5, 2)
<b>K:</b>	(-4, -5)	<b>L:</b>	(0, -2)
<b>M:</b>	(3, -1)	<b>N:</b>	(3, 2)
<b>O:</b>	(-1, 4)	<b>P:</b>	(5, 0)

3. The graph below shows several figures. Use the information to answer the questions.



a. Which points meet the conditions where  $x < 1$  and  $y > -2$ ?

b. At approximately which points do the triangle and the circle intersect?

c. Name the ordered pair that represents the center of the circle.

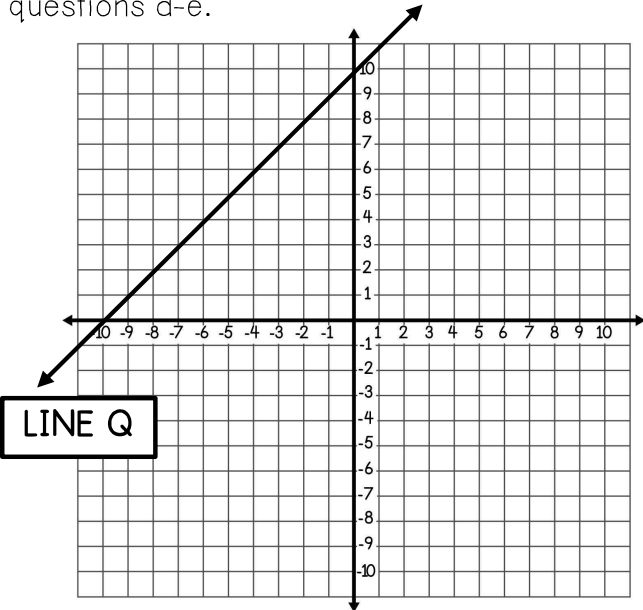
d. Describe where F is located in relation to the origin.

Summarize today's lesson:

# GRAPHING ON THE COORDINATE PLANE

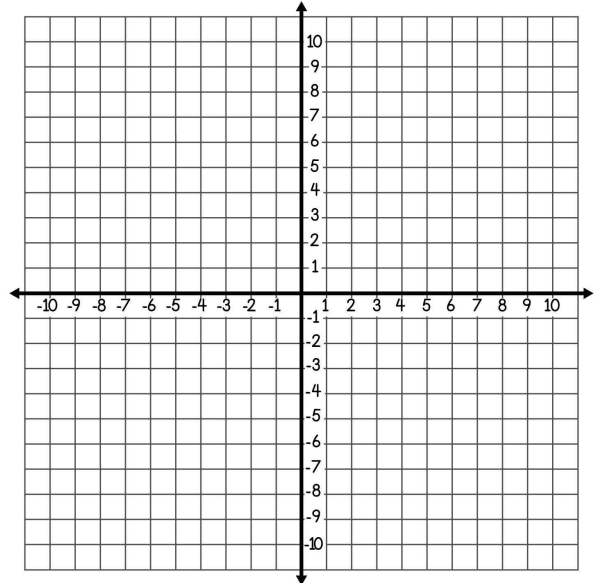
Answer the following questions. Be sure to explain your thinking.

1. Use the coordinate plane below to answer questions a-e.



- Name a point that is on line q. \_\_\_\_\_
- Label point A at (4, 2) and point B at (-3, 9).
- Draw a line through A and B and label it "p."
- Where do lines p and q intersect? \_\_\_\_\_
- The intersection lies in what quadrant or on which axis? \_\_\_\_\_

2. Use the coordinate plane below to answer questions a-c.



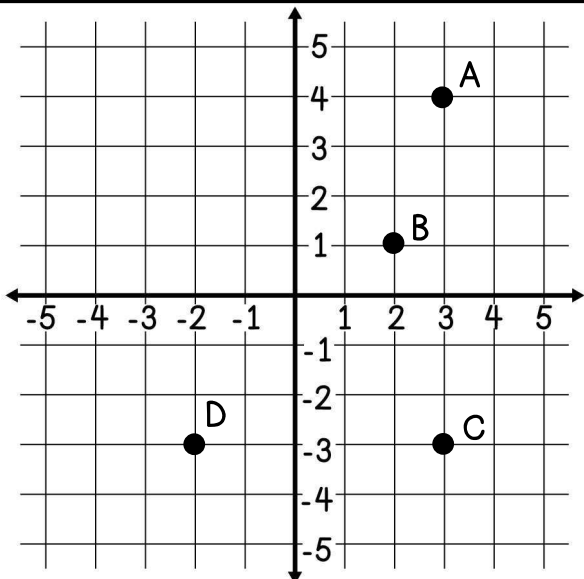
a. Plot the following points and then determine in which quadrant the points are located:

**A: (-8, -6)**

**B: (4, -6)**

**C: (-2, 8)**

- Label and connect the coordinates above.
- Determine a coordinate that lies on line segment AB. \_\_\_\_\_



3. What is the ordered pair of a point located four units to the left of the origin and three units above the origin?

4. Which point best represents the ordered pair (-2, -3)?

5. What ordered pair represents point C?