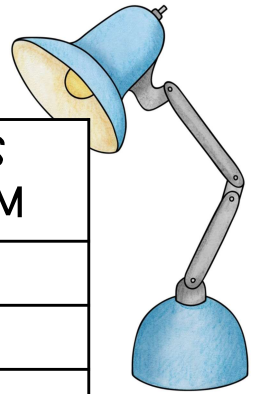


DORM ROOM DESIGN

You are getting ready to go off to college! In order to be prepared, you must pack your belongings and determine what will fit and how to keep it organized. Use the information below to design your ideal dorm room for you and your roommate. Be sure it meets the criteria of the college.

FURNITURE INCLUDED IN YOUR DORM ROOM

ITEM	NUMBER OF ITEMS	DIMENSIONS OF EACH ITEM
twin bed	2	7 x 11
small refrigerator	1	2 x 2
tall dresser	1	3 x 2
wide dresser	1	7 x 2

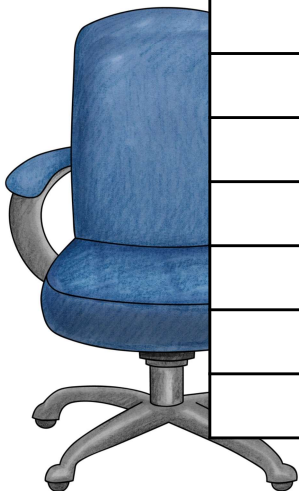


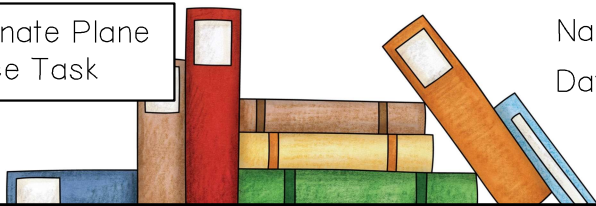
DORM ROOM CRITERIA:

- Fire code requires a clear path to the doorway and at least 100 square units of space that is free from furniture.
- At least 5 additional items must be included in your design.
- At least 2 items must be placed with rational number ordered pairs.

OTHER OPTIONS TO INCLUDE

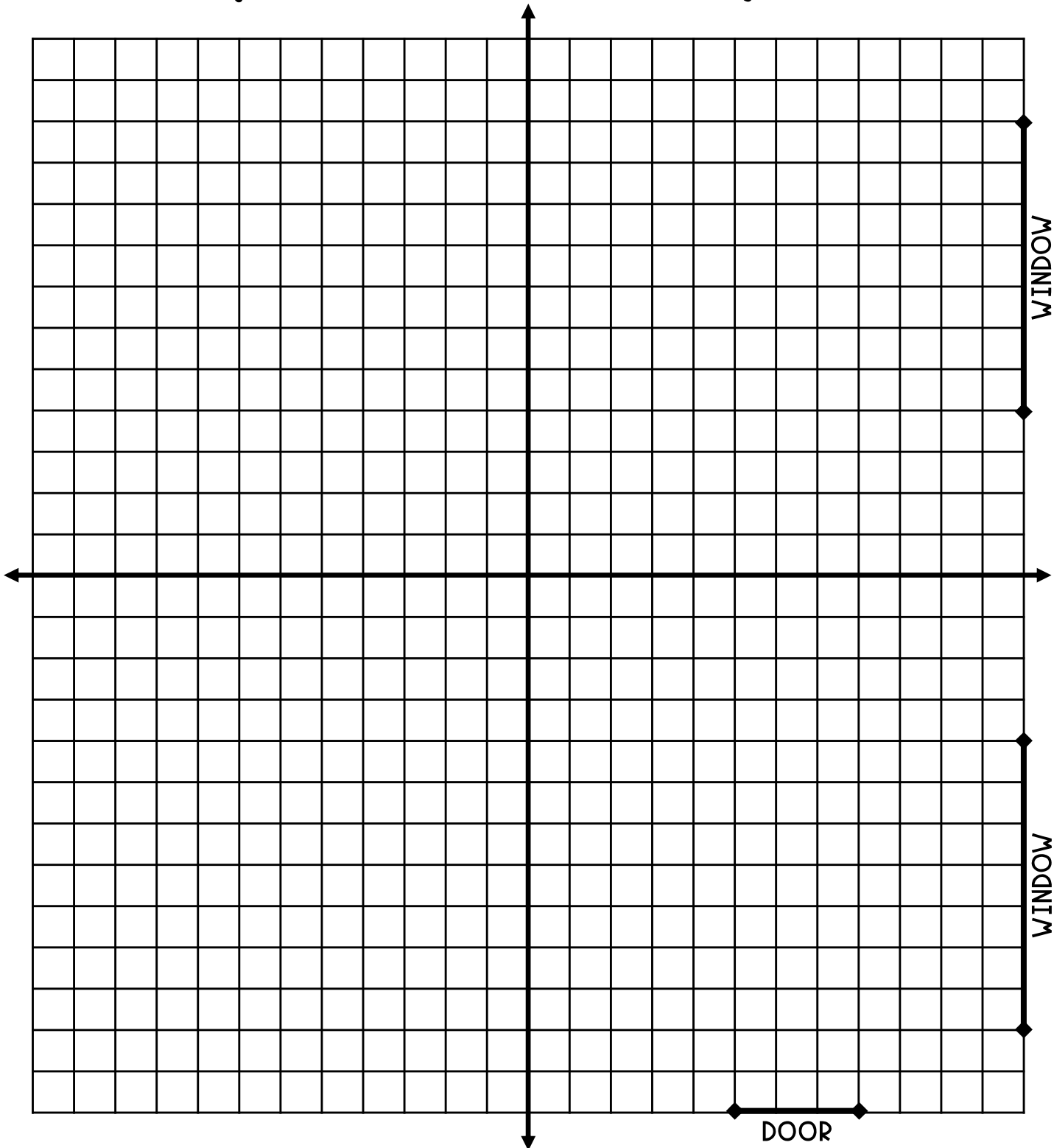
ITEM	NUMBER OF ITEMS	DIMENSIONS OF EACH ITEM
nightstand	4 maximum	2 x 2
bookshelf	2 maximum	5 x 1
tv stand	1 maximum	5 x 2
comfy chair	2 maximum	3 x 3
desk	2 maximum	6 x 3
desk chair	2 maximum	2 x 1
rug	2 maximum	10 x 8
lamp	3 maximum	1 x 1



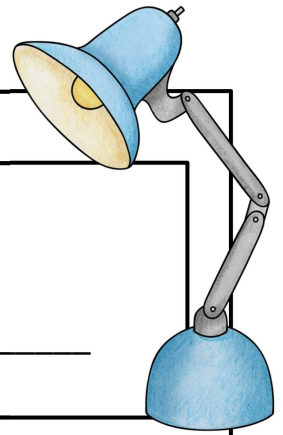


DORM ROOM DESIGN

You are getting ready to go off to college! In order to be prepared, you must pack your belongings and determine what will fit and how to keep it organized. Use the information below to design your ideal dorm room for you and your roommate. Use the shape tool to create and label the different objects. Be sure it meets the criteria of the college.



DORM ROOM DESIGN



Answer the questions below using the space you designed.

ADDITIONAL DORM ROOM FURNITURE

Complete the table with the coordinates of each piece of furniture.

ITEM	ORDERED PAIR #1	ORDERED PAIR #2	ORDERED PAIR #3	ORDERED PAIR #4
twin bed #1				
twin bed #2				
small refrigerator				
tall dresser				
wide dresser				

Using your understanding of the coordinate plane, list any furniture items in your dorm room that are in or on the locations below.

QUADRANT 1

QUADRANT 2

QUADRANT 3

QUADRANT 4

X-AXIS

Y-AXIS

Reflect on your problem solving process. How could you improve upon your plan to design your dorm room if you were to do it again?

PERFORMANCE TASK RUBRIC

	ABOVE STANDARD	MET STANDARD	BELOW STANDARD
MATHEMATICAL CONTENT	Places objects on the coordinate plane, records their ordered pairs, and identifies their locations without error 40 points	Places objects on the coordinate plane, records their ordered pairs, and identifies their locations with few errors 30 points	Places objects on the coordinate plane, records their ordered pairs, and identifies their locations with multiple errors 20 points
MATHEMATICAL THINKING	Provides reasoning for different selections and recommendations in the questions 15 points	Provides some reasoning for different selections and recommendations in the questions 10 points	Does not provide reasoning for different selections and recommendations in the questions 5 points
PARTICIPATION	Participates fully 15 points	Participates with minor redirects from teacher 10 points	Participates with major redirects from teacher 5 points
SHOWS WORK	Shows work for 100% of the questions 15 points	Shows work for 80% or more of the questions 10 points	Shows work for less than 80% of the questions 5 points
FOLLOWS DIRECTIONS	Follows directions and criteria fully 15 points	Follows directions and criteria with few errors 10 points	Follows directions and criteria with multiple errors 5 points

TEACHER NOTES:

TOTAL POINTS: