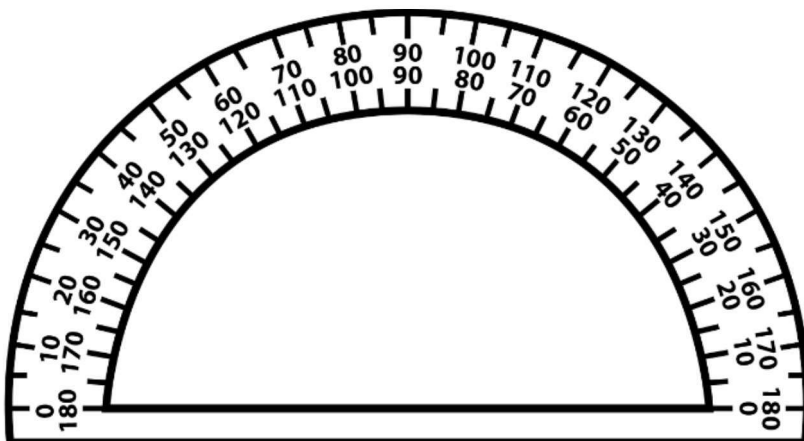
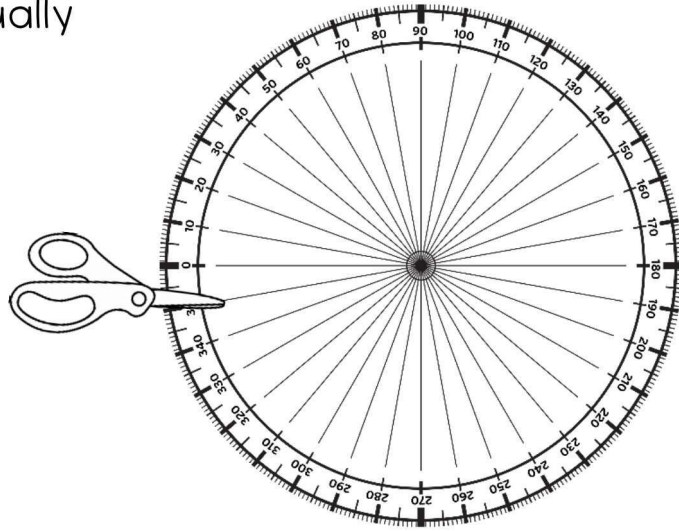


Measuring Angles

Mathematicians cut the full circle protractor in half at 180 degrees to create the protractor we usually use to measure angles.

Think about the circle protractor as a number line that is curved. It starts at 0 and goes all the way to 360.

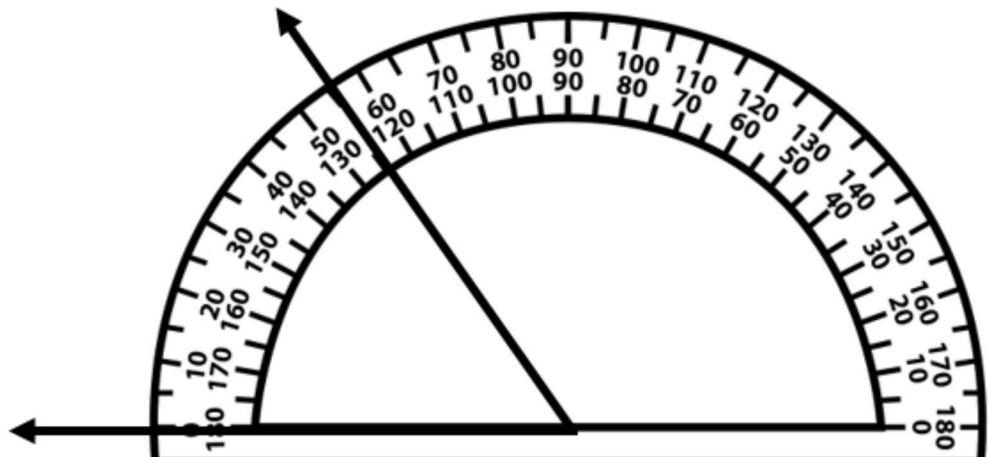


The common protractor has a number line that goes from 0 to 180 on top.

Shade these numbers yellow. It also has a “backwards” number line right below. Shade these numbers blue.

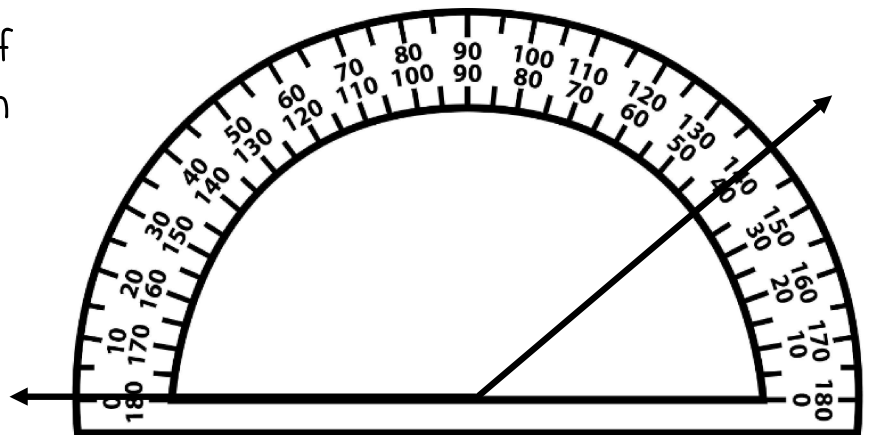
Label

- each of the 2 rays
- the vertex of the angle
- the angle itself
- the zero edge of the protractor

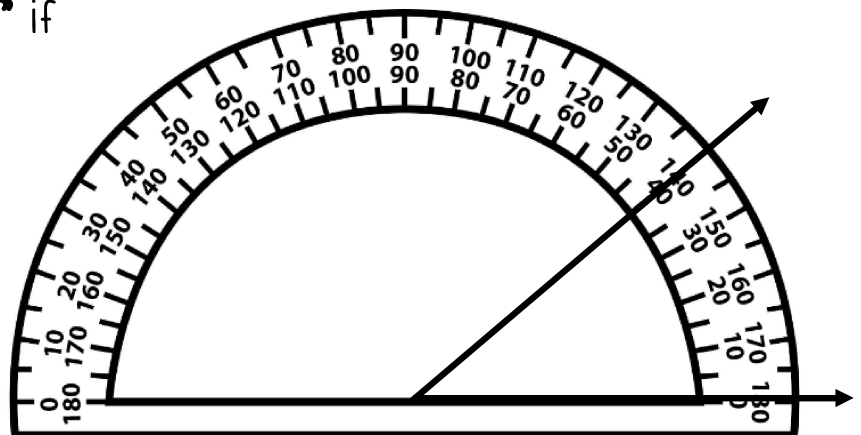


Which Number do I use?

Use the "top numbers" if
one ray passes through
the _____



Use the "bottom numbers" if
one ray passes through
the _____



Another way to think about it.

First find the ray that passes through _____. Trace that
number line, starting with _____, and follow it until you get to
the _____. Use the number _____
_____ to name the measure of the angle.