

# Dream House Project

As we wrap up our unit on area and perimeter, you will now have the opportunity to design a one-story dream house! The project has been split into 4 parts, so read each part carefully.

## Part 1: Land and Property

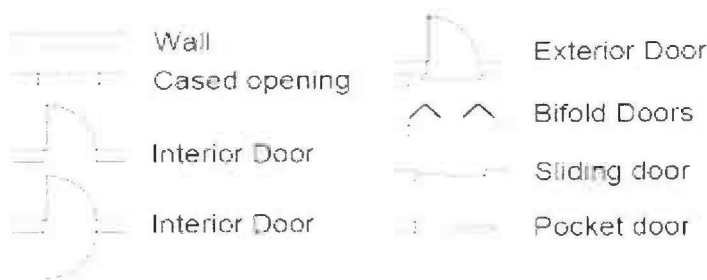
- Your land has been given to you and is 48,000 square feet! The property line is in the form of a rectangle, with dimensions measuring 6,000ft wide and 8,000ft long.
- The problem with this large size of land is that there isn't a fence. Since you have some adventurous dogs, you need to put up a fence so they don't escape! **Find the perimeter of your property to know how much fencing you need.**

## Part 2: Dream House Requirements (area & perimeter of each)

- Your house CANNOT be a square or rectangle and must be a composite figure (multiple shapes put together)
- Must have at least 6 rooms (kitchen, bathroom, bedroom, living room, dining, family room, game room, craft room, lounge, theater room, etc). You may have more than one of each room (ex: 3 bedrooms)
- Property improvements must have (you decide measurements):
  - Triangle garden
  - Circle pond
  - Trapezoid dog house
  - Parallelogram barn
  - Rhombus shaped pool
  - Garage (size of your choice)

## Part 3: Details for Separate Rooms:

- Bedrooms should have closets and rooms should have doors



- Measurements should be in feet (ft) only

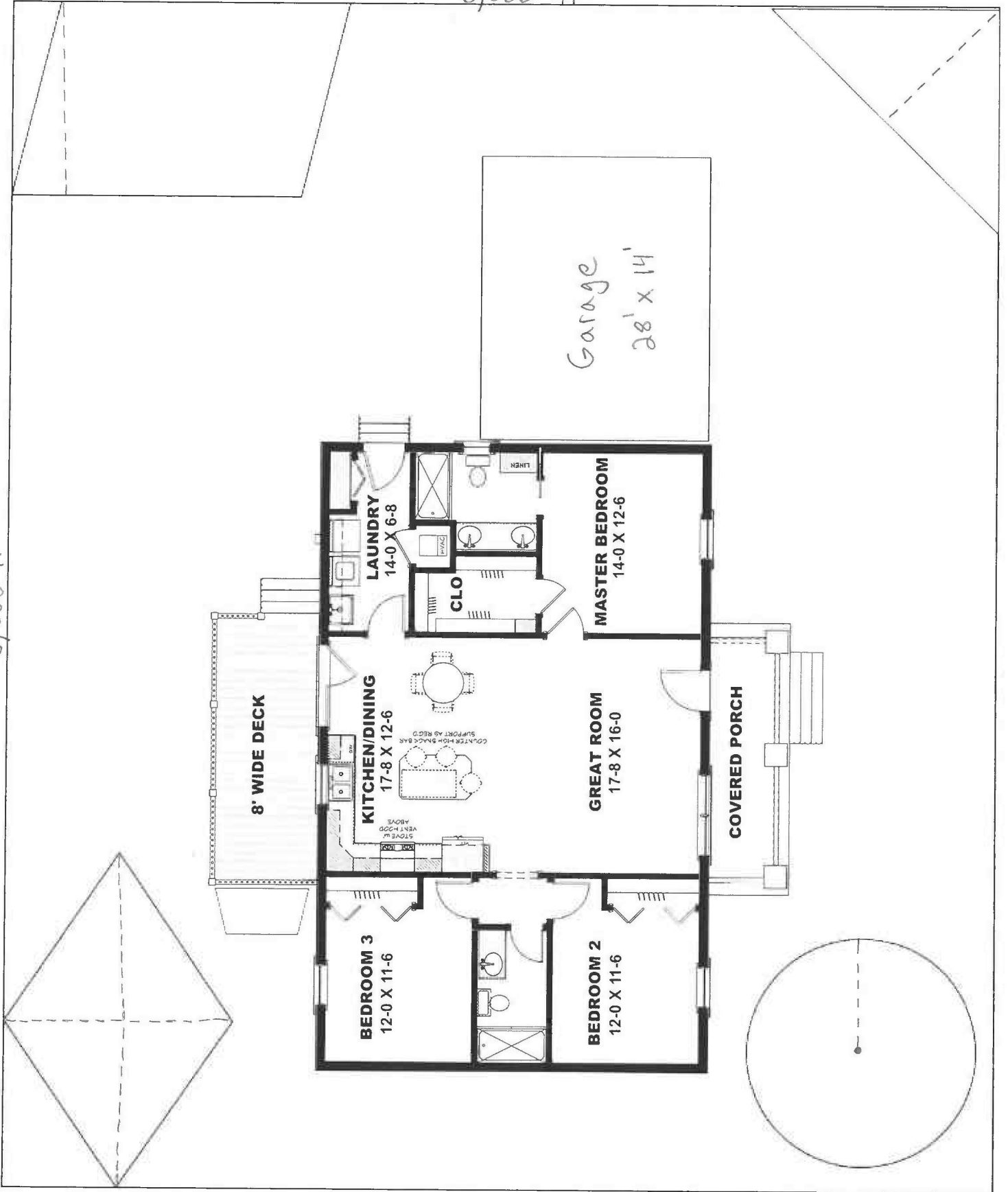
## Part 4: Completing the Math:

- Area & Perimeter of land
- Area & Perimeter of each room (and total for house)
- Area of backyard improvements
- Turning in TWO assignments:
  - House Design (labeled)
  - Math Calculations

# Dream House Project

6,000 ft

8,000 ft



# Dream House Project

<b>Property Land</b>	<b>Triangle Garden</b>
<b>Circle Pond</b>	<b>Trapezoid Dog House</b>
<b>Parallelogram Pond</b>	<b>Rhombus Shaped Pool</b>
<b>Room:</b>	<b>Room:</b>

# Dream House Project

<b>Room:</b>	<b>Room:</b>
<b>Room:</b>	<b>Room:</b>
<b>Room:</b>	<b>House Total</b>