

Name: _____

Period: _____

Poetry Analysis USING TPCASTT

Directions: As you read the poem, practice using the TPCASTT strategy to develop an in-depth understanding of the poem.

T	TITLE What do you think the poem will be about based on the title? What might the title mean?	
P	PARAPHRASE Read the poem one time. Then, paraphrase each line or stanza or explain what's happening in your own words .	
C	CONNOTATIONS Reread the poem and think about the emotions implied by certain words and phrases. Notice devices the poet uses.	
A	ATTITUDE Examine the speaker. Who is it? What is the topic? What is their tone throughout the poem? How do they feel?	
S	SHIFTS Look for any shifts or changes within the poem. Look at the structure, the sounds, the subjects, and the tone.	
T	TITLE Revisit the title. How does it relate to, enhance, or change your understanding of the poem? What does it reveal?	
T	THEME Consider the theme or the central message of the poem. What is the poet trying to say? Use a complete sentence.	

T - TITLE

Title: _____

Poet: _____

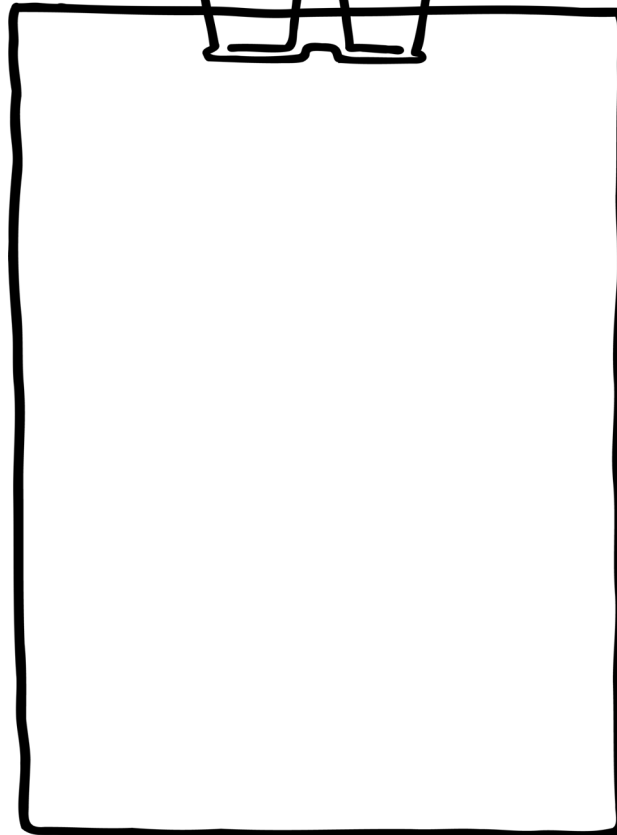
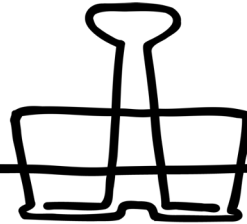
What do you think the poem will be about based on the title? What questions do you have?

P - PARAPHRASING

- Read the poem one time through.
- Go back to the beginning and **paraphrase each line**. This means to put each line in your own words.
- You should end up with your own translated version of the poem in the margins.

C - CONNOTATION

- Now you're going to look at the **connotative meanings** or *emotional* meanings of the words and phrases in the poem.
- You don't need to list every poetic device used in the poem, but you should identify and figure out the meaning of those that contribute most to the poem.



A - ATTITUDE

- Next, we'll take a closer look at the speaker's attitude.
- Who is the speaker?

- What is the topic of the poem?

- Describe the speaker's tone throughout the poem.

- Based on this information, how does the speaker likely feel towards the topic?

